



**TRANSITIONAL  
HOUSING**

**GUIDE**

Transitional housing facilities are faced with the daunting challenge of supporting a diverse population of homeless individuals and families that often have vastly different experiences and needs. With a combination of intelligent design, access to resources and the efforts of staff and volunteers, facilities can create a safe and welcoming environment to aid those in transition.

At Norix, our mission of **balancing safety & security with humanizing challenging environments** is at the heart of every product we create. Our team of designers and engineers scrutinize over every minute detail with a fundamental focus on producing innovative products with **Features That Matter**, for both the residents in transition and the staff members dedicating their lives to this effort.

## The Features That Matter

ANTI-LIGATURE DESIGN

BALLASTABLE

CONTRABAND RESISTANT

EASY CLEANABILITY

ERGONOMIC DESIGN

EXTREME DURABILITY

GREENGUARD GOLD CERTIFIED

NON-REMOVABLE GLIDES

RECYCLABLE

ROUNDED EDGES

TAMPER RESISTANT

TRUCOLOR™ TECHNOLOGY

**BALANCING  
SAFETY &  
SECURITY WITH  
HUMANIZING  
CHALLENGING  
ENVIRONMENTS.**



# FULL FACILITY FURNITURE SOLUTION

LOBBY

CAFETERIA

ACTIVITY ROOM

DOUBLE ROOM

FAMILY ROOM

LIBRARY/FLEX SPACE

OUTDOOR SPACE

WITH OVER 40 YEARS OF EXPERIENCE WORKING WITH CHALLENGING ENVIRONMENTS, NORIX PROVIDES PROVEN FURNITURE SOLUTIONS FOR YOUR ENTIRE FACILITY.



# LOBBY

Serving as the initial point of contact for your facility, it's critical for the lobby to establish a warm, comforting atmosphere to help ease the transition between the outside world and the refuge within. Lobbies are often faced with the highest amount of traffic in your facility, making it vital for the furnishings used in this space to be extremely durable, easy to clean and safe for all ages.

## PRODUCTS

1. Tabla
2. Forma Series

A thoughtfully designed lobby should incorporate a waiting area and a designated play area for kids to help alleviate stress from homeless parents. Visual cues and signage should be used to indicate where lines form and where certain service areas are located.

### **KIDS SPACE**

Playfully designed seating and tables that utilize a calming color scheme can help foster a kid-friendly space where children can find comfort in an otherwise unfamiliar environment. With open sightlines to the designated play area, parents can feel comfortable conducting business knowing that their children are safely occupied.

### **A VARIETY OF FABRICS**

Fabrics with texture and patterns are less susceptible to visible wear because they more easily hide imperfections, while vinyl fabric options are the best choice when cleanability is top of mind. Access to hundreds of unique fabric options makes it easy to find an ideal to fit any lobby area.





# CAFETERIA

Cafeteria settings can expose residents to environments that reflect the real-world, helping to support their transition and better prepare them for life outside the facility. As a communal area subjected to the rigors of daily wear and tear, the tables and seating options used in this space must be highly robust and easily sanitized.

## PRODUCTS

1. Oasis®
2. Affinity
3. Multi-Purpose

By focusing on the design and ambiance of the cafeteria, a transitional housing center can create a space that nourishes both the body and the spirit, promoting overall well-being and a sense of community among its residents.

### OPEN FLOOR PLANS

Implementing an open floor plan can offer a variety of benefits for both residents and staff members. It can reduce feelings of anxiety by allowing the room to feel less crowded. The open sightlines can also encourage residents to engage with one another and build relationships.

### NATURAL LIGHTING

Access to natural light has been shown to improve mood and enhance well-being, which can be particularly important for residents in transitional housing facilities. By allowing natural light to enter, facilities also earn the additional benefit of relying less on artificial lighting, which can save on energy costs and reduce their environmental impact.





# ACTIVITY ROOM

Activity rooms should avoid stressful or negative environmental factors, such as loud noises or a lack of windows. Incorporating positive distractions like artwork, music, plants and other nature views can have a positive influence on resident well-being.

## PRODUCTS

1. Vesta Guest
2. Forté® Occasional
3. Hondo Nuevo
4. B-Side
5. Elle Series
6. Hex-It
7. Mix-Up Series



As the area in which residents will experience the most social interaction within the facility, it's vital for activity rooms to closely reflect a normalized environment that mirrors life outside the facility. An open-plan concept that allows residents to rearrange and create their own spaces can help enhance their sense of independence and autonomy.

### FLEXIBLE FURNISHING

Furnishing with floor glides are essential for enabling a flexible environment – especially in areas with carpeted flooring. The ability to safely and easily reconfigure the layout of the room allows residents and staff members to adjust the space to accommodate a variety of situations.

### MATERIAL USE

Highly durable and easily sanitized materials, like Norix's rotomolded options, are vital for maintaining a safe, clean and kid-friendly environment. In addition to providing a similar level of durability and cleanability as classic steel options, rotomolded plastic furnishings offer a softer feel and a variety of color options to help make the facility feel more comfortable.



### PRODUCTS

1. Leg-Style
2. Progress



# DOUBLE ROOM

Presenting residents with an opportunity to make an area their own can help them feel more at home. Even small additions like cork boards to showcase artwork and photos or providing residents with a designated area to display personal objects can have a positive influence on their state of mind.

## PRODUCTS

- |    |                             |    |                             |
|----|-----------------------------|----|-----------------------------|
| 1. | Titan® Table Desk           | 5. | Titan® Nightstand           |
| 2. | Progress Chair              | 6. | Comfort Shield®<br>Mattress |
| 3. | Titan® Frame Style Bunk Bed |    |                             |
| 4. | Titan® Drawer Locker        |    |                             |



# FAMILY ROOM

Resident rooms that incorporate a variety of design concepts, like access to natural light, color application and connections to nature, have been shown to improve the mental and social behavior of residents.

## PRODUCTS

1. Protégé Double Bunk Beds
2. Protégé Nightstand
3. Protégé Locker
4. Comfort Shield® Mattress

For group or family rooms, it's important to incorporate a component of privacy without jeopardizing overall safety. Storage containers and personal wardrobes can be used to help achieve a sense of privacy, even in spaces occupied by multiple families.

### COLOR USE

Studies have shown that colors found in nature can often feel soft and soothing, creating a supportive environment for patients as they strive towards rehabilitation. With many transitional housing facilities facing overcrowding, implementing lighter colored walls and furnishings is recommended to make the space feel less crowded.

### OUTDOOR CONNECTIONS

Employing nature as a healing distraction has proven to be beneficial for all ages. The use of art pieces, such as murals, that reflect nature can be used to help blur the lines between interior and exterior, resulting in reduced anxiety among residents.





# LIBRARY/FLEX SPACE

A library or multi-purpose space is a key resource for supporting residents seeking to further their education, receive vocational training or exercise spiritual growth. Access to these resources is often a critical first step in improving the lives of the homeless and can have an immensely positive impact on their mental health and overall well-being.

## PRODUCTS

- |                  |                    |
|------------------|--------------------|
| 1. Mix-Up Series | 4. Toro Series     |
| 2. Element Sofa  | 5. Leg-Style Table |
| 3. RockSmart®    | 6. Progress Chair  |



# LIBRARY/FLEX SPACE

Establishing designated areas for residents to study, search for employment and conduct interviews is particularly important for supporting personal and professional growth. In some cases, this may be the first time they have been granted access to the tools necessary to improve their situation.

## PRODUCTS

1. Progress
2. A-Maze
3. Hex-It

Library furniture needs to be highly durable and easily sanitized to endure the rigors of daily use but should also offer a degree of ergonomic comfort that encourages knowledge growth among residents. A variety of table and seating combinations can be used to create independent areas for solitary learning or for group sessions.

### ACCOMMODATIONS FOR VOCATION & SPIRITUAL GROWTH

Supporting vocation and spiritual growth among inmates can help reduce the likelihood of recidivism and play a critical role in their successful reintegration into society. Investing in their personal and professional development can help break the cycle of incarceration and create a more just and equitable society.

### ERGONOMIC COMFORT

Ergonomic comfort is a key component for creating a relaxing environment for residents to focus on improving their well-being. Furnishings designed specifically to offer easy egress are often necessary to help cater to the needs of veterans and the physically disabled.





# OUTDOOR SPACE

With human biology deeply rooted in nature, outside environments can offer residents a sense of familiarity and comfort that supports general well-being. Although it may seem counterintuitive to establish an outdoor space for individuals and families seeking shelter, studies have shown that the mental and physical benefits of nature are too great to ignore.

## PRODUCTS

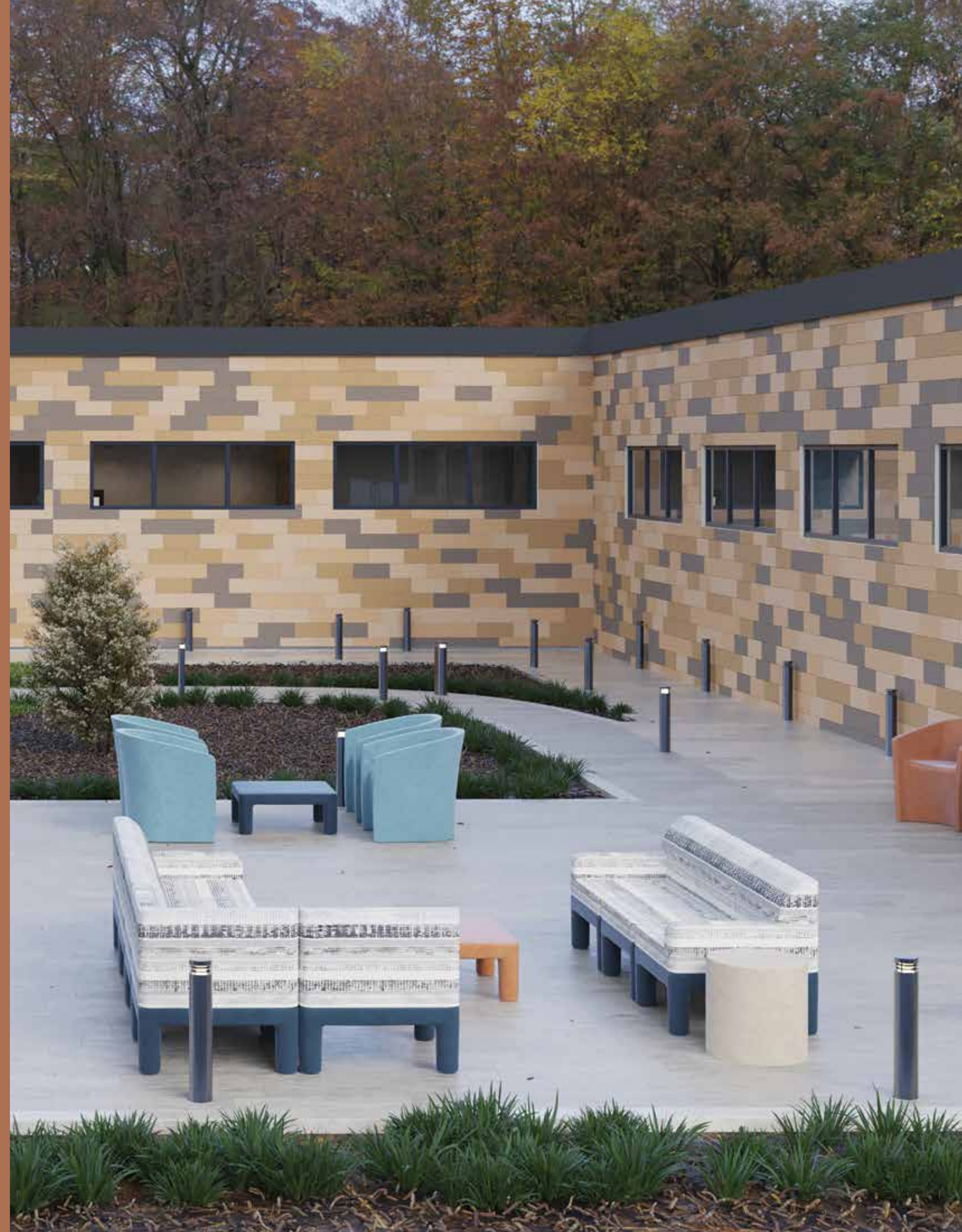
1. B-Side
2. Coupe™
3. Kube Series



The functional use of outdoor areas has proven to be an ideal nurturing environment, full of fresh air and natural light that provides residents with an opportunity to actively engage in their own recovery.

## OUTSIDE OPPORTUNITIES

Outdoor areas, such as a courtyard, an outdoor garden or recreational area, can act as a sanctuary for residents young and old. Outdoor exercise has been shown to reduce stress and anxiety levels, improve sleep quality and help prevent cognitive decline.



# NORIX<sup>®</sup>

AT NORIX, WE DESIGN INNOVATIVE,  
ROBUST FURNITURE THAT MEETS THE  
REAL-WORLD NEED FOR HUMANIZING  
CHALLENGING ENVIRONMENTS

The success of Norix is due to the dedication to our customers, the community, and employees. As we strive to care for our environment and our people, we seek to change in small ways, such as how we live our personal lives, and significant ways such as how we make decisions at Norix Furniture.

## Interested in our products?

Call us to schedule a tour of our showroom:  
**630-231-1331**



AT NORIX, WE DESIGN INNOVATIVE,  
ROBUST FURNITURE THAT MEETS THE  
REAL-WORLD NEED FOR HUMANIZING  
CHALLENGING ENVIRONMENTS.

# ENGINEERED TO ENDURE<sup>®</sup>

**NORIX**<sup>®</sup>  
TRANSITIONAL HOUSING

One Innovation Drive, West Chicago, Illinois 60185  
Phone: 630-231-1331 / Toll Free: 800-234-4900 / Fax: 630-231-4343  
furniture@norix.com | ©2023 Norix Group, Inc. | Printed 8/23

**NORIX.COM**